



Sensors

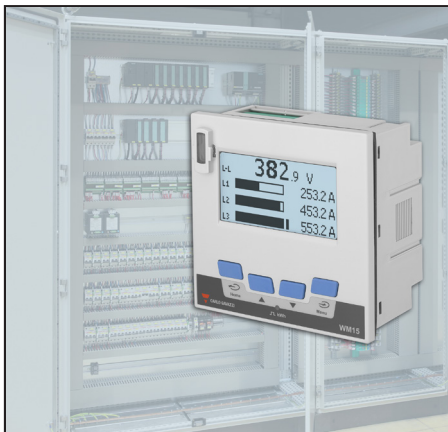


Switches



Controls

Application notes



Application Note : December 2019

Market involved : Energy efficiency

Product : WM15

Customer : OEM and facility managers

Subject : Predictive maintenance combining energy consumption and load operating time

CUSTOMER ISSUE :

Sensitive loads, like big machines or robots, require an attentive maintenance program, typically based on operating time.

OUR SOLUTION :

The WM15 provides accurate energy consumption data.

The corresponding run hour meter can be set with a current threshold so that it is linked only to operating time and not to stand-by mode.

The remote monitoring of the values of energy and operating time allows the prompt detection of consumption anomalies.

The page that shows the energy and run hour meters can be set as the homepage, so that the maintenance staff can easily identify the machines to be checked.

After the maintenance action, all the partial meters can be reset and a new action scheduled.

BENEFITS :

- Selectable current threshold to start/stop the run hour meter
- Selectable home page
- Possibility to reset the partial run hour meter and the partial energy meters via keypad or Modbus remote command
- Modbus RTU communication port for remote analysis, reports and alerts
- Reduction of the costs of downtime by predictive maintenance